

MEADOWDALE INTERNATIONAL RACEWAYS

Carpentersville, Illinois

THE COURSE: A 3.27-mile road course opened in 1958. It's asphalt-paved, 32' wide, includes both uphill and downhill sections, hairpins, esses, a 4000' straight, and one of the few banked 180° turns (the "Monza Wall") in use on American sports car circuits.

SPECTATOR AREAS: Many and excellent. One of the best is inside the far right-hand loop, from which both the end of the straight and the downhill right-hand turn may be seen. The "Monza Wall" is in full view from both the grandstand and the parking/spectator area it partially encloses.

LAP RECORDS:

2:16.9 (85.95 mph.), under 1600 cc. mod.

2:04.0 (94.90 mph.), over 1600 cc. mod.

RESTRICTIONS: None.

FACILITIES: Parking for 30,000 cars. No extra charge for parking or grandstand seats, but paddock passes are additional. Refreshments and johns.

SANCTION: USAC, SCCA.

ANNUAL EVENTS:

Meadowdale Grand Prix (for sports cars), Memorial Day weekend.

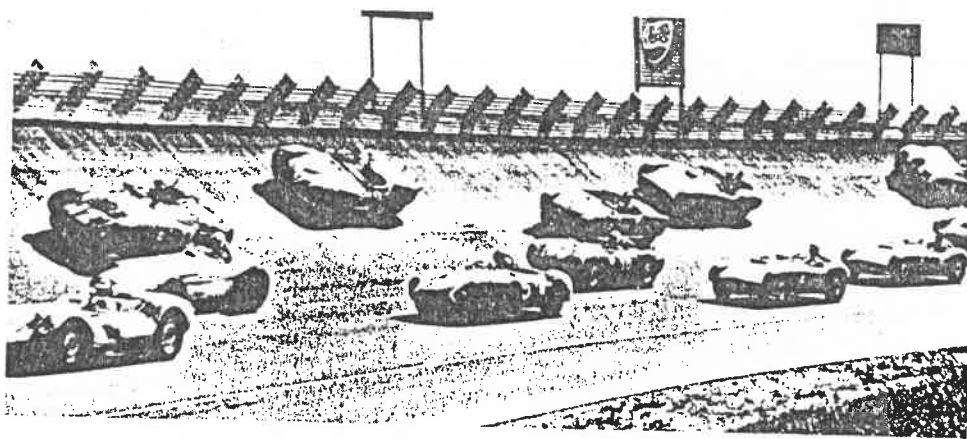
SCCA National Races, August.

October Rennen (for sports cars), October.

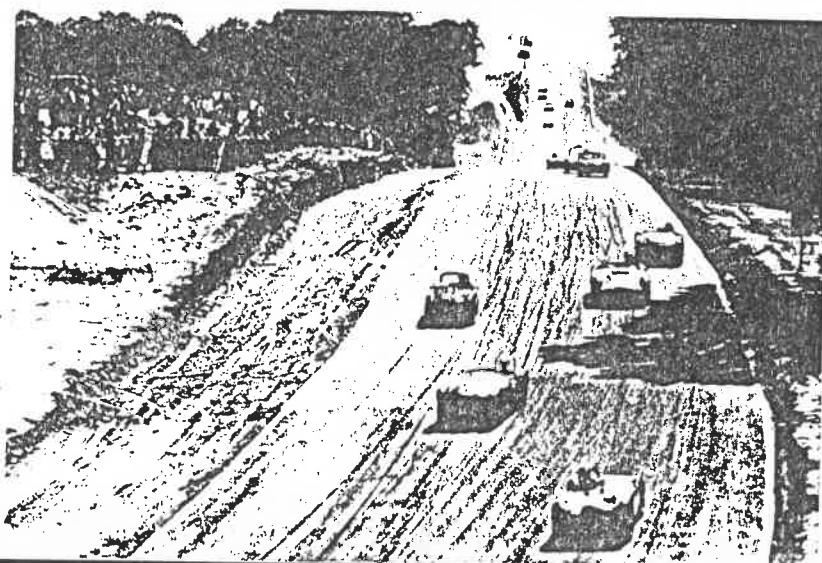
TRAVEL DIRECTIONS: Carpentersville is 45 mi. northwest of Chicago on Ill. 31, 3 mi. north of Elgin. From Chicago, take Northwest Tollway to Ill. 31.

LESSEE: Mid-America Auto Racing, Inc., Ralph Banghart, Pres., P.O. Box 304, Carpentersville, Ill. HAZel 6-6741.

INFORMATION: From lessee, above, about both events and accommodations. Mailing list maintained.



(Above) Meadowdale's "Monza Wall," named after the famous Italian course near Milan. (Right) The end of the 4000' straight.



Stone, Wm. S.
A guide to
American Sports
Car Racing
Dbl'dy ©1963